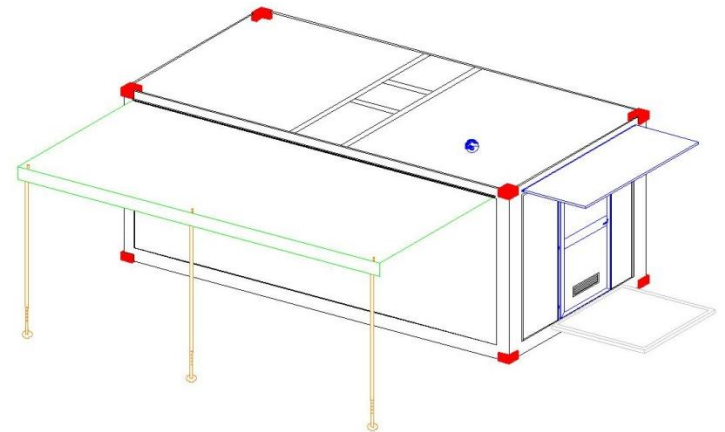
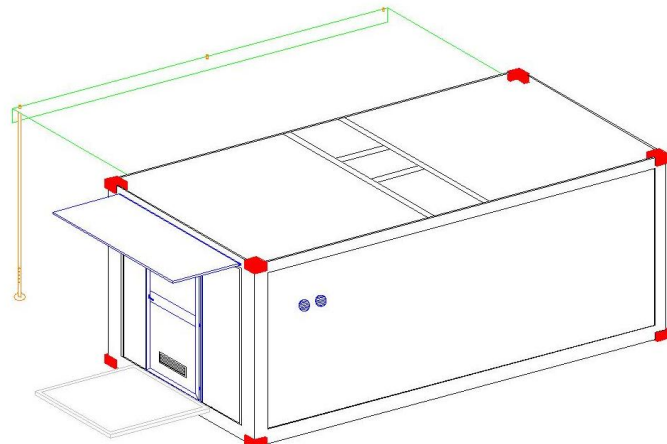
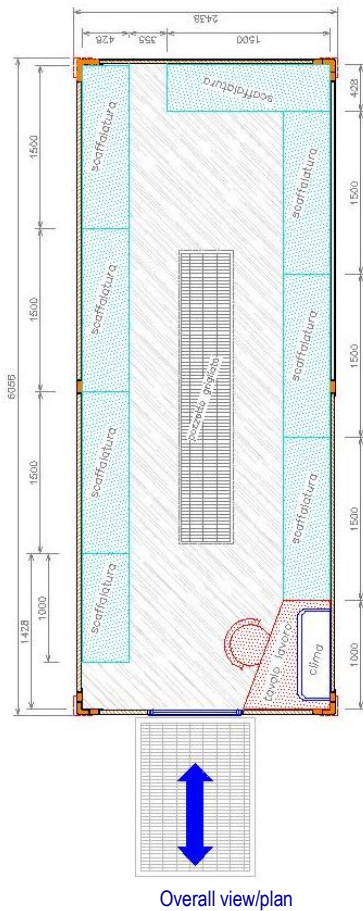




## DATA SHEET 21.7



### Unit for: Mobile Foodstuff Store on 1 Module ISO 20'

#### Mod. CON-MDD-X1/A1

- |  |   |
|--|---|
| <ul style="list-style-type: none"> <li>a) Sturdy support structure in extruded aluminium profiles (L. 5754 and/or 6082) with corner blocks welded to the eight corners, all in compliance with standard ISO 20'.</li> <li>b) Transportable with ordinary vehicles, as well as international standard vehicles (ship- train- container transport vehicles etc.).</li> <li>c) Footboards and steps for access, which can be hooked to the structure and transported inside.</li> <li>d) Sheet metal floor in stainless steel with non-skid strips, on waterproof multi-layer wood, with an ample grid-covered well to collect internal cleaning water.</li> <li>e) Curtain walls in 10/10 double aluminium sheet panels with 40 mm insulation (polystyrene or polyurethane).</li> <li>f) Perfectly smooth interior and exterior, with fastening to the structures using polymeric structural sealant glue and total internal sealing.</li> <li>g) Door in extruded aluminium profiles with safety glass and panic bar.</li> <li>h) Prepared for hanging shelves on walls.</li> <li>i) Possible use on board the vehicle or on the ground.</li> <li>j) Intermediate and side (veranda/tents) structures to cover transit and outdoor work zones.</li> <li>k) Custom paint and finishing for higher visibility.</li> <li>l) Dimens. of module in mm: length 6058 x width 2438 x height 2591. (ref. standard ISO 20'-1CC).</li> </ul> | <ul style="list-style-type: none"> <li>1. Electricity from 380 V external source (or different on request).</li> <li>2. Internal electrical control panels for external branches and safety devices in compliance with current regulations.</li> <li>3. External shunt and internal distribution according to standards in force.</li> <li>4. Equipment on module includes: <ul style="list-style-type: none"> <li>&gt; 1 corner work bench and chair for the module manager;</li> <li>&gt; 7 stainless steel shelf units each measuring approx. L.1500xH.2000xP.400 mm, each equipped with 4 shelves in perforated sheet metal or electro-welded wire; on request shelves (also separately) can be created in a container shape, to hold the content even while moving;</li> <li>&gt; 1 shelf as above but L. 1000 or max. L. 1200 mm.;</li> </ul> </li> <li>5. Equipment to connect external drains, with accessories.</li> <li>6. Grounding system with connection and relevant rods.</li> <li>7. Air conditioning unit approx. 12000 Btu/h.</li> <li>8. Set up time for "ready state": approx. 10 min., with trained staff.</li> <li>9. Ideal as a support module for mobile kitchens for about 250+350 meals/h.</li> </ul> |
|--|---|

#### Price: Ex-works Gruaro – Italy

1. MOD. CON-MDD-X1/A1 (with equipment indicated): ..... Euro/each \_\_\_\_\_ + VAT -

