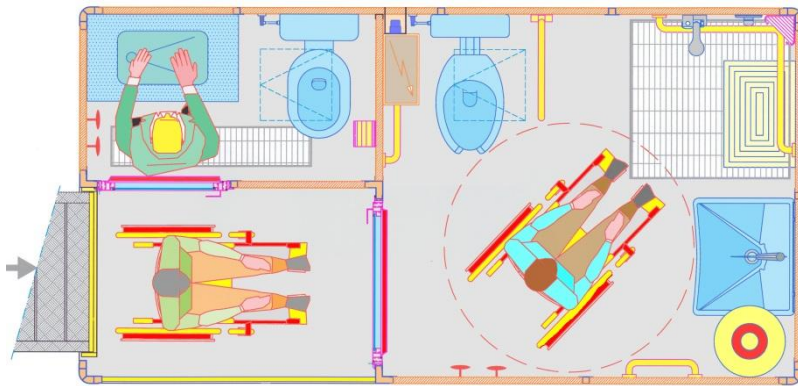


DATA SHEET 22.5



View/plan view of the unit



View of module in load/unload mode from the tilt-bed trailer



Details of the special cabin for the diversely able



External view of the access platform/ramp

Mobile Toilet Unit for the diversely able transportable on tilt-bed trailer

MOD. MB4/2WCD-PR-1N+1H/A

- | | |
|---|---|
| <ul style="list-style-type: none"> a) Sturdy supporting structure with aluminium section bars obtained from press-formed L. 6082 sheets and/or extruded shaped sheets, welded at the joints to form a self-supporting, free standing unit. b) Transportable by a trolley/trailer with a load capacity of 20-25 q, or by standard vehicles with a loading platform large enough for the overall dimensions indicated below. c) Access platform, completely in aluminium, integrated in the structure. d) Stainless steel, non-skid floor on waterproof, multi-layer wood support. e) Shower hob in electro-welded galvanized grid over stainless steel floor-set tubs. f) Insulated aluminium and stratified laminated partitions g) External curtain walls with sandwich panels in 1/10 double aluminium sheets coated with 40mm polyurethane insulation. h) Aluminium door and window frames with polycarbonate "glass" and panic bars. i) Single entrance (rear side) on the area for the users of the two cabins; inbuilt technical compartment with access from outside on removable panel. j) transport wheels can be applied(also for winching on tilt-bed trailer) or lifting with crane from prearranged points. k) Custom paint and finishing work for higher visibility. l) Nominal size of freestanding unit (in mm.): length 4050 x width 2100 x height 2300 (as for flatbed trailer). m) trolley/trailer (if required) approved for standard "transportation of goods", 2 axles and ball hitch, with 2000+2500 kg capacity with tilting platform and pull/release winch | <ul style="list-style-type: none"> 1. Electricity from 220 V external source (or 380 V on request) on protected EEC plugs. 2. Internal electrical control panel for external branches and distribution on various lights and sockets, with safety devices in compliance with current regulations. 3. Technical compartment accessible from the exterior, with systems equipment and branches. 4. Module equipment includes: <ul style="list-style-type: none"> ➤ 1 special cabin especially for the diversely able, therefore equipped with shower seat and grab bars, special shaped toilet bowl seat, special shaped washbasin, large mirror, various shelves, alarm button with external viewer, specific handles ➤ 1 standard stall with English bowl, washbasin, mirror and accessories; under the washbasin, sewage release pump and heat transfer services with access from outside. ➤ 1 vestibule/entrance, required to access to two aforementioned stalls, open to the outside, protected by parapet and folding platform/ramp, complete with removable footboard for wheelchair safety. 5. Plumbing equipment with connection to outside network + discharge channelled in tank equipped with sewage release pump; all with quick fasteners and flexible piping provided. 6. 1 50 l electric boiler for hot water to showers and sinks. 7. 2 electric ceiling fans (porthole-type) with double effect (In/Out) and speed control. 8. Grounding system with connection and rods. 9. Set-up time for "ready state": approx. 30 minutes with trained staff. 10. Pipes, tanks (on request) and external connection accessories for branches and drains. 11. Removable wheel kit for ground transport and/or load/unload on/from tilt-bed trailer. |
|---|---|

Prices: Ex-Works Gruaro - Italy

- | | | |
|---|------------|-----------|
| 1. Mod. MB4/2WCD-PR-1n+1h/A (as described with: 1 spec. stall + 1 standard stall): | €uro _____ | + V.A.T.- |
| 2. Suitable trailer with tilt-bed and winch: | €uro _____ | + V.A.T.- |

